

JDC PRECISION CUTTER



The JDC has become the accepted standard for most corporations worldwide for preparing samples of paper, paperboard, metal foils, nonwovens, films, tissue and a variety of other materials. Lightweight and portable, the JDC can also be anchored via the cast iron base for added stability and operator safety. Shields are provided to ensure safety as well.

The JDC cuts test strips to an exact width and parallel throughout their entire length. The positive cutting action of the dual blades and precision ground base shear cut both sides of the sample at once assuring you of a clean, accurate cut every time. The cutting blades are made of special tool steel which is stressrelieved by cycling between cold and hot temperatures to prevent the blades from warping.

- 20" Base provides added leverage for cutting
- Optional adjustable platforms available
- Optional safety shield available

The JDC cutter is designed to last for many years and a reconditioning service is available that provides the capabilities of a brand new cutter for half the cost. Reconditioning includes regrinding the cutting blades and providing a new base shear.

PHYSICAL SPECIFICATIONS

Cutting specifications	Width: 3mm to 76mm Length: 254mm, 304.8mm, 406.4mm
Overall dimensions (Based on cutting configurations)	127 mm x 559 mm x 381 mm
Net weight (Depends on cutting configuration)	10,5 - 46kg
Gross weight (Depends on cutting configuration)	15 - 51kg
Parallelism tolerance	.0254 mm
Optional cutter accessories (Additional cost)	Platform kit Safety shield kit

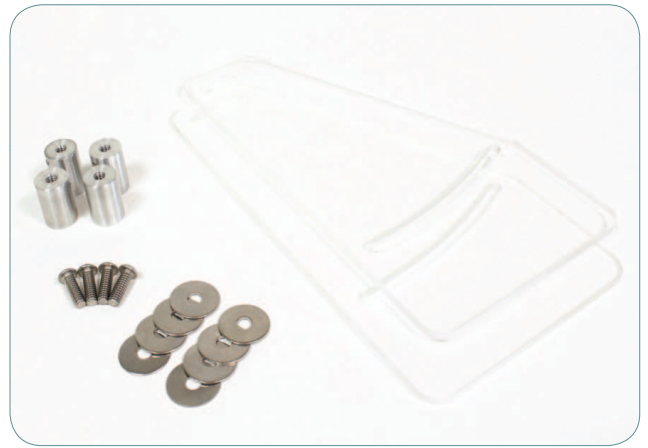


Adjustable platforms

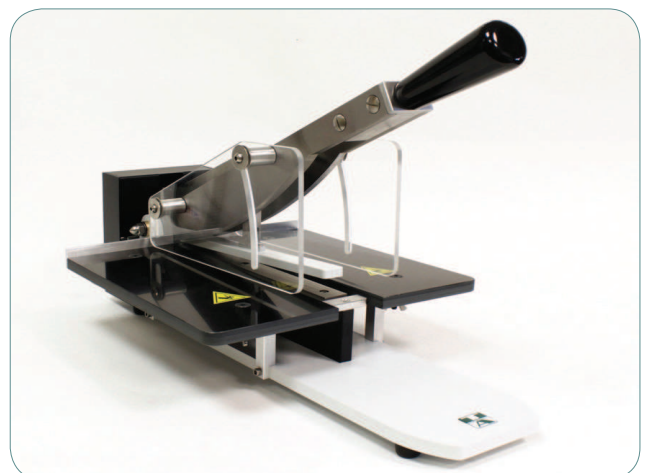
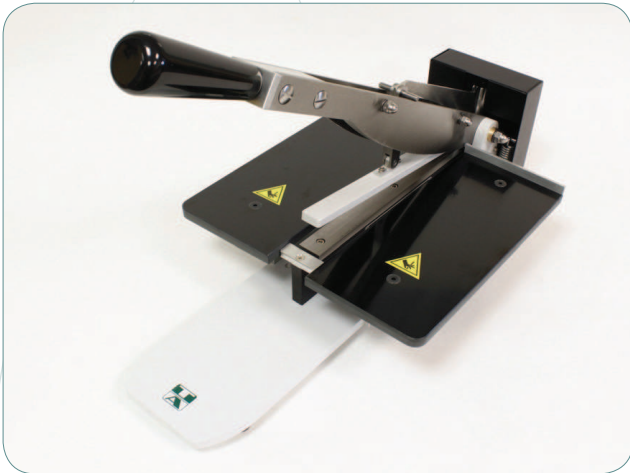


Platform Kit (Part # 99 - 3011)

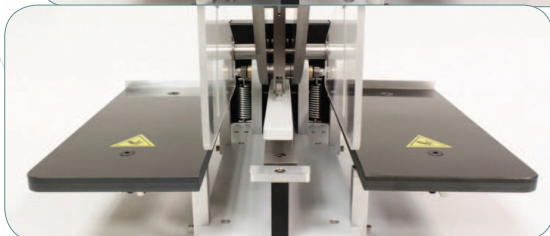
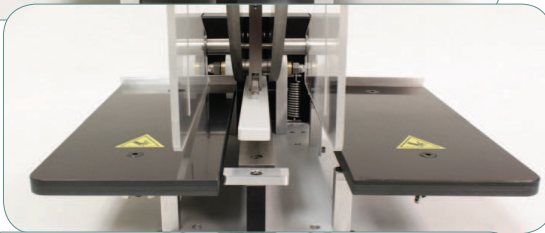
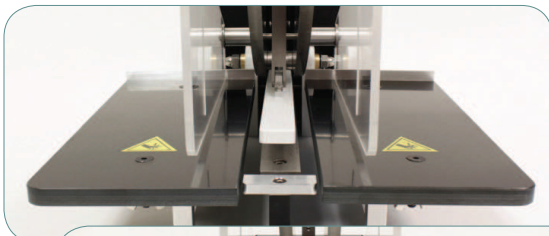
Safety Shield



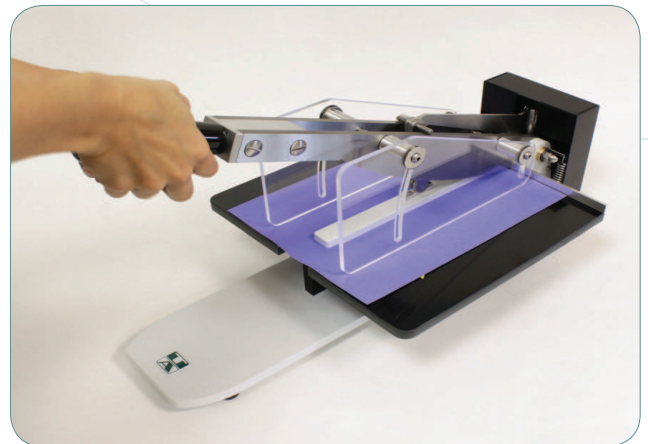
Safety Shield Kit (Part # 99 - 3012)



Shown with optional platform kit and safety shield



Adjustable
platforms provide
12" to 14.5"
cutting surface



RECONDITIONING SERVICE INCLUDES:

Regrinding side blades and a new base shear

RYCOBEL GROUP
Nijverheidslaan 47
8540 Deerlijk , België
T +32 (0)56 78 21 70
F +32 (0)56 77 30 40
E info@rycobel.com
www.rycobel.com

