

THE TME **MDT-50**
PRECISION LEAK TESTER

MDT-100
LEAK AND FLOW TESTER



*The "Work Horse Twins"
from the Specialists*

Cost Effective, Simple and Reliable

- ❑ **Simple to use, stable and repeatable**
- ❑ **Quantitative Results**
- ❑ **Rugged, Bench Top Work Horse Durability**
- ❑ **Reliable, Low Cost Pressure Decay Leak Testing**
- ❑ **Precision Flow Testing**
- ❑ **Easily Integrated into Automated Equipment**
- ❑ **NIST Traceable Calibration Services**

The MDT-50 is a rugged, durable non-destructive leak tester using clean, dry air to test plastic or metal parts. This instrument is ideal for a wide variety of applications, either on the production floor or in the quality control testing laboratory. The addition of a precision mass flow sensor changes the MDT-50 to an MDT-100 Leak and Flow Tester with the same stable, repeatable work horse characteristics.

APPLICATIONS

AUTOMOTIVE/APPLIANCE COMPONENTS:

- ❑ Radiators
- ❑ Valves
- ❑ Castings
- ❑ Gas Filters

MEDICAL DEVICES:

- ❑ Catheters
- ❑ Bags
- ❑ Filters
- ❑ Culture Plates

PHARMACEUTICAL AND FOOD PRODUCTS:

- ❑ Dosage Vials
- ❑ Induction Welds
- ❑ Lidded Trays



Simplicity of the MDT-50/100 Eliminates Operator Influence

Because a single button activates the test cycle, operator influence is eliminated as a factor in the test of your product. Simple, clearly understood, color coded front panel controls enable the set-up of your test times and pressure limits in seconds, and additional features of the instrument are easily accessible to the setup operator by scrolling through the *Menu* shown on the bright alpha-numeric display.

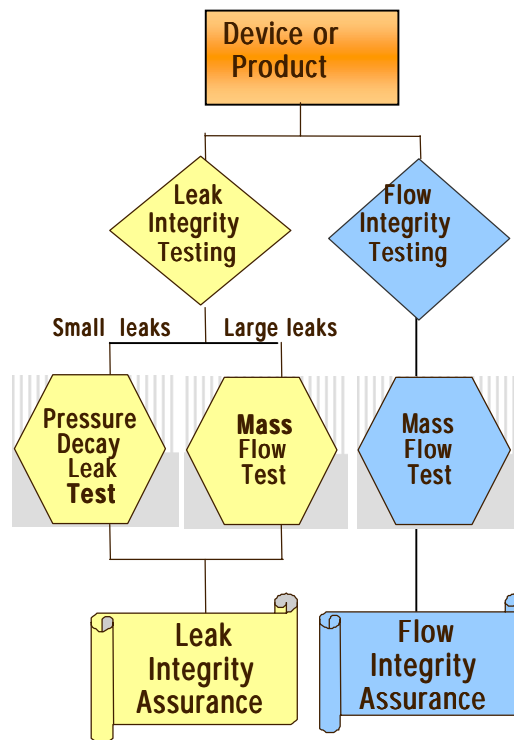
TMElectronics, Inc.
Specialists in Leak, Flow and Package Testing

Tel: +001 508 869 6400
Fax: +001 508 869 9955
sales@tmelectronics.com
www.tmelectronics.com

Leak Testing with the MDT-50 or 100 is simply pressure sensing, with its high performance resulting from our proprietary sensing technology and low internal volume design. Pressure changes as low as .0001 psi are detected from leaks in the tested part.

Vacuum decay testing functions similarly to pressure decay tests; however, vacuum tests are limited to less than one atmosphere test pressure and are usually performed where specifications of the test part demand this pressure differential.

Flow Testing with the MDT-100 uses a precision mass flow sensor to make a direct measurement of air flow through the tested part. A direct flow reading means no separate pressure measurements or special calculations are made in the instrument.



SPECIFICATIONS

MDT-50 and MDT-100

| | |
|-----------------------------------|---|
| Dimensions | 13"W x 14"D x 6" H |
| Power | 100-125V, 60Hz, 150VA |
| Operating Controls..... | Push Buttons, Power ON/OFF Switch Key Pad, Pressure Adjustment |
| Single Tests (MDT-50 or 100)..... | Flow or Pressure Decay |
| Dual Tests(MDT-100) | Flow then Pressure Decay or Pressure Decay then Flow |
| Display..... | Vacuum Fluorescent, Alphanumeric 1 x 20 |
| DATALOG Memory..... | Up to 500 Test Results |
| Printer | Parallel Interface, Epson Compatible |
| Manual Output..... | Prints the Test Setup Parameters and Current Test Results |
| Automatic Output..... | Current Test Results if Printer is Connected and Ready |
| Auxiliary Output..... | Remote Start/Stop Switch Interface to other TMElectronics Instruments |
| Accessory Port | Dry contact or PLC connections or connections to other TME instruments |
| Calibration..... | NIST Traceable |
| Security | Key lock on front panel for cycle control and data protection |
| Timer Ranges..... | 1 to 1,000 Sec. |
| Options | Foot switch, Clamp Drivers, Continuous Cycle |
| Overall Resolution | Up to 0.0001 psi |

FEATURES OF THE MDT-50/100

- **Performance** *Performance results from our proprietary sensing technology and low internal volume design. Pressure changes as low as 0.0001 psi can be detected from leaks in the tested part.*
- **Stability** *Electronic stability is proven with our proprietary single ended pressure transducer design with an extremely stable A/D converter and digital electronics.*
- **Security** *Key lock security of the test program and the data log is provided on the front panel. No changes to the program or data can be made when the lock is on.*
- **Communications** *Visual and audible alarms indicate a passed or failed test part. The Accessory Port provides dry contact or low voltage drive signals that operate with a PLC or other external devices.*

TMElectronics, Inc.
Specialists in Leak, Flow and Package Testing

Tel: +001 508 869 6400
Fax: +001 508 869 9955
sales@tmelectronics.com
www.tmelectronics.com